



**Our PaddleStart package includes:**

Comprehensive Health Check  
Comprehensive Husbandry Assessment  
Basic Blood Testing  
Water Quality Testing  
Microchip and Registration  
UVB Light Testing  
Turtle Grit and Turtle Salt  
Full Body Radiograph (X-ray)



**The Unusual Pet Vets**

[www.unusualpetvets.com.au](http://www.unusualpetvets.com.au)

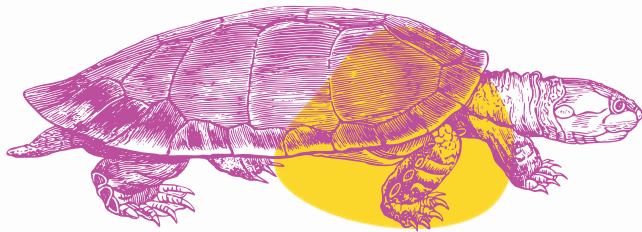


*paddle*   
**START**  
*package*



# What Is The PaddleStart Package?

Our PaddleStart package is designed for owners of turtles to help ensure all aspects of their health and wellbeing are being managed and catered for.



The first few months with any new pet can be daunting so this package will give you peace of mind while providing your turtle with premium veterinary care. This is an all-inclusive package made for turtle owners.

How Much Does It Cost?

**PaddleStart Package**  
**\$400.00**

## Comprehensive Health Check & Husbandry Assessment

The key to your turtle's health starts with their environment and diet. As each species of reptile has different requirements, our vets will assess these in detail and work with you to achieve the best enclosure and diet for your species of turtle. Reptiles are masters of hiding their illness. In the PaddleStart package a complete physical exam will be performed by our experienced reptile vets.

## Basic Blood Testing

A complete blood count is also included in the package. This test allows us to screen for signs of infection and inflammation and provides baseline results for us to compare to if your turtle becomes unwell. As anaemia is a common concern in pet reptiles, this also lets us identify underlying illnesses in their early stages.

## Water Quality Testing

Water quality issues are amongst the most common problems we encounter with our turtle patients and is the number one cause of illness. Part of your turtle's program includes a complete water test allowing issues to be identified and addressed before a problem develops.



**PaddleStart Package Includes**

## Microchipping & Registration

Microchip identification is a safe and highly effective means of identifying your pet. Microchips enable lost reptiles to be reunited with their owner and offers a way to permanently identify your turtle. Microchip implantation and lifetime registration on a national database is included in the package.

## UVB Light Testing

The quality and function of your turtle's UVB light is an essential component to their health and wellbeing. As part of the program, we offer testing of your current UVB light setup to ensure proper function and output within your turtle's enclosure.

## Turtle Grit and Turtle Salt

Turtle grit (calcium grit) and turtle salt are useful additives to your turtle's enclosure to help reduce risk of infection, to supply an essential source of calcium and to help with water stabilisation. As part of the package, we will supply you with a 5kg bag of turtle grit and a 2kg bag of turtle salts for use in your setup.

## Radiology (X-ray)

Two common problems encountered in our captive pet turtles are shell and bone density issues. A full body radiograph to check for shell and bone abnormalities is included as part of your turtle's package.

