



Our FlockStart package includes:

Flock Health Assessment
Blood Lead Analysis
Crop Wash
Faecal Testing
Feather Microscopy
Chlamydia Testing



The Unusual Pet Vets

www.unusualpetvets.com.au



flock
START
package

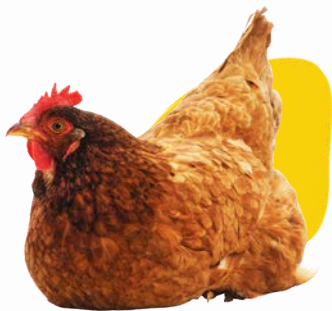


What Is The FlockStart Package?

The FlockStart Package is designed as a cost-effective, one-stop health assessment for your flock. The idea is to give you peace of mind and to ensure that your chickens are as healthy as possible.



Often backyard poultry flocks may appear healthy, but there are common conditions that can affect their health, the production of eggs and potentially the health of the people that are eating the eggs.



Flock Health Assessment

A comprehensive health assessment including a review of the diet and feeding practices.

Blood Lead Analysis

To check lead levels within your flock; this is especially important for free-range chickens housed on soil that has been exposed to high levels of lead.

Lead toxicosis can not only affect exposed chickens, but also accumulates within the yolk and can cause disease in humans (especially children) that eat the eggs.

Crop Wash

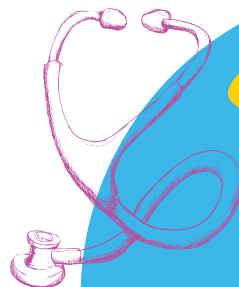
For assessment of giardia, trichomonas and spirochaetes.

Faecal Testing

To assess for internal parasites and other pathogenic organisms.

Feather Microscopy

To check for feather mites and lice.



FlockStart Package Includes

Chlamydia Testing

Chlamydia psittaci testing to check for avian chlamydial infection, which is a bacterial infection that can cause disease in both chickens and people.



For pricing on our Chicken FlyStart package, please visit our website.

www.unusualpetvets.com.au

